



MATERIAL

Cast AISI CF-8 stainless steel, sandblasted matte finish.
AISI 304 stainless steel screw and washer.
AISI 304 zinc-plated steel nut.

STANDARD EXECUTIONS

Base with 2 assembly holes.
- **GN 146.6-A:** without sealing washers and closing ring.
- **GN 146.6-B:** with acetal resin based (POM) technopolymer sealing washers and silicone closing ring.

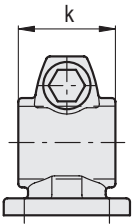
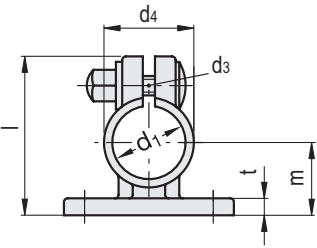
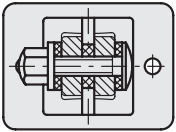
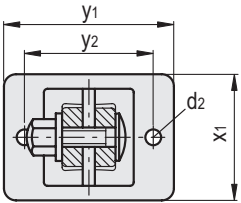
FEATURES AND APPLICATIONS

GN 146.6 connecting clamps are shaped so as to provide an optimum clamping with tubes GN 990 (see page 1368).
The particular shape of the screws and nuts prevents the formation of condensation.
In the execution GN 146.6-B, the presence of technopolymer sealing washers and silicone ring allows the sealing of the hole and thread making them waterproof.



GN 146.6-A

GN 146.6-B



Conversion Table	
1 mm = 0.039 inch	
d1	
mm	inch
30	1.18

GN 146.6-A

Code	Description	d1	d2	d3	d4	k	l	m	t	x1	y1	y2	⚖
GN.46951	GN 146.6-B30-A-4	30	6.5	M8	37	40	65	30	7	52	71	53	313

GN 146.6-B

Code	Description	d1	d2	d3	d4	k	l	m	t	x1	y1	y2	⚖
GN.46952	GN 146.6-B30-B-4	30	6.5	M8	37	40	65	30	7	52	71	53	315